

PRODUCT DESCRIPTION

GEO◆SKRIM® N40BHD is a scrim reinforced geomembrane, consisting of a flexible and conforming linear-low-density polyethylene and a chemically resistant high-density outer layer. The closely knit 9x9 weft inserted polyester scrim reinforced core is fully encapsulated. The outer layers are formulated to provide an optimal balance of environmental stress crack resistance, toughness, and for excellent resistance to aqueous chemicals and solvents. Exceptional durability, high tensile and puncture strengths are achieved with the combination of high-strength polyethylene and a dense scrim reinforcement. GEO◆SKRIM N40BHD geomembranes are produced in the color black as standard, and are available in other custom manufactured colors with minimum order quantity requirements.

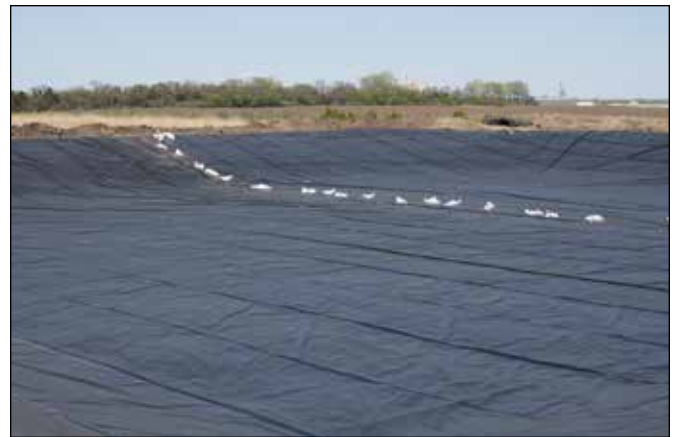
PRODUCT USE

GEO◆SKRIM N40BHD is used in applications that require exceptional outdoor life requiring up to 20 years of exposure depending upon the geographical location. Applications requiring high tear properties, exceptional tensile strength and puncture resistance utilize N40BHD to meet these demands. GEO◆SKRIM N40BHD is manufactured from a chemical-resistant high-density and linear-low density polyethylene with excellent cold crack performance and resistance to thermal expansion.

GEO◆SKRIM N40BHD meets the physical property values as stated in GRI test method GM25.

SIZE & PACKAGING

GEO◆SKRIM N40BHD is available in a variety of widths and lengths to meet the project requirements. Large diameter mill rolls are available to assure an efficient seaming process. Factory welded panels are produced in a controlled environment and are accordion folded and tightly rolled on a heavy-duty core for ease of handling and time saving installation.



Bio Cell Liner

PRODUCT

PART #

GEO◆SKRIM N40BHD

APPLICATIONS

- | | |
|---------------------|-------------------------|
| Waste Lagoon Liners | Landfill Caps |
| Floating Covers | Canal Liners |
| Tunnel Liners | Disposal Pit Liner |
| Remediation Liners | Water Containment Ponds |
| Earthen Liners | Heap Leach Liner |
| Remediation Covers | Secondary Containment |

PRO-FORMA DATA SHEET

		GEO♦SKRIM® N40BHD			
		IMPERIAL		METRIC	
PROPERTIES	TEST METHOD	MINIMUM	TYPICAL	MINIMUM	TYPICAL
APPEARANCE		Black		Black	
CORE THICKNESS	ASTM D5199	36 mil	40 mil	0.91 mm	1.02 mm
WEIGHT	ASTM D751	169 lbs/msf	188 lbs/msf	825 g/m ²	918 g/m ²
CONSTRUCTION		9x9-1000 Denier PET scrim reinforced polyethylene			
TONGUE TEAR STRENGTH	ASTM D5884	85 lbf	125 lbf	378 N	556 N
GRAB TENSILE AT BREAK	ASTM D7004	255 lbf	325 lbf	1134 N	1446 N
TENSILE ELONGATION AT BREAK	ASTM D7004	22 %	36 %	22 %	36 %
PUNCTURE RESISTANCE	ASTM D4833	95 lbf	120 lbf	423 N	534 N
STANDARD OIT OR HIGH PRESSURE HPOIT	ASTM D3895 ASTM D5885	100 min 400 min	150 min 2400 min	100 min 400 min	150 min 2400 min
HYDRAULIC CONDUCTIVITY		7.2 x 10 ⁻¹¹ cm/sec			
MAXIMUM STATIC USE TEMPERATURE		180° F		82° C	
MINIMUM STATIC USE TEMPERATURE		-70° F		-57° C	

PRO-FORMA SHEET CONTENTS: The data listed in the Pro-Forma data sheet is representative of initial production runs. These values may be revised at anytime without notice as additional test data becomes available.



GEO♦SKRIM N40BHD is a scrim reinforced geomembrane, consisting of a flexible and conforming linear-low-density polyethylene and a chemically resistant high-density outer layer. The closely knit 9x9 weft inserted polyester scrim reinforced core is fully encapsulated. The outer layers are formulated to provide an optimal balance of environmental stress crack resistance, toughness, and for excellent resistance to aqueous chemicals and solvents. Exceptional durability, high tensile and puncture strengths are achieved with the combination of high-strength polyethylene and a dense scrim reinforcement. GEO♦SKRIM N40BHD geomembranes are produced in the color black as standard, and are available in other custom manufactured colors with minimum order quantity requirements.

Note: To the best of our knowledge, unless otherwise stated, these are typical property values and are intended as guides only, not as specification limits. Chemical resistance, odor transmission, longevity as well as other performance criteria is not implied or given and actual testing must be performed for applicability in specific applications and/or conditions. GEOCHEM, INC. MAKES NO WARRANTIES AS TO THE FITNESS FOR A SPECIFIC USE OR MERCHANTABILITY OF PRODUCTS REFERRED TO, no guarantee of satisfactory results from reliance upon contained information or recommendations and disclaims all liability for resulting loss or damage.