

# GEO◆SKRIM N36BT1

SCRIM REINFORCED POLYETHYLENE – NSF/ANSI STANDARD 61 CERTIFIED

## PRODUCT DESCRIPTION

**GEO◆SKRIM N36BT1** is a textured flexible geomembrane, reinforced with a closely knit 9x9 weft inserted polyester scrim fully encapsulated between two layers of highly UV stabilized lineal low density polyethylene. Exceptional toughness, high tensile and puncture strength is achieved with the combination of premium high strength LLDPE and dense scrim reinforcement. A highly stabilized formulation consisting of antioxidants, UV stabilizers and carbon black provide excellent protection for long-term exposed or barrier applications.

**GEO◆SKRIM N36BT1** outer surface layers consist of a cast texture known as our exclusive GeoGrip™ technology. The GeoGrip™ texture is made up of durable random spikes and diamond shaped bidirectional bars for unmatched uniform stabilization and support. **GEO◆SKRIM NT-Series** geomembranes are produced in the color black as standard, and are available in other custom manufactured colors with minimum order quantity requirements.

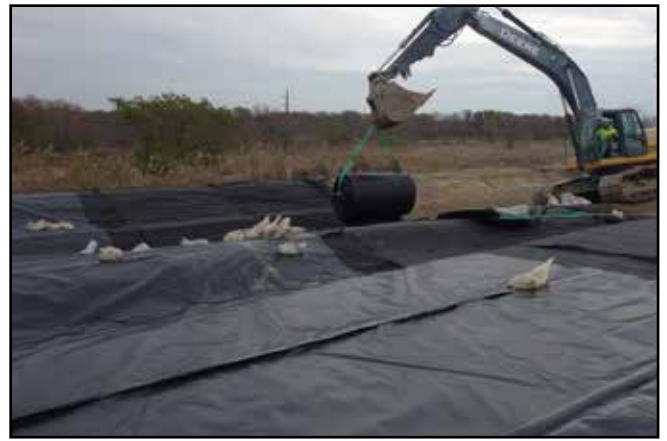
## PRODUCT USE

**GEO◆SKRIM** textured NT-Series are used for applications that require an anti-skid surface or to provide a high friction surface between unlike soil types and geosynthetic materials for steeper slope designs depending upon application requirements. Common applications include landfill caps, mining leach pads and containment ponds. **GEO◆SKRIM N36BT1** is used in applications that require exceptional outdoor life, high tear properties, exceptional tensile strength, and puncture resistance. **GEO◆SKRIM NT-Series** is manufactured from a very chemical-resistant, linear-low-density polyethylene with excellent cold crack performance and resistance to thermal expansion.

**GEO◆SKRIM N36BT1** meets the physical property values as stated in GRI test method GM25, and is certified under the NSF/ANSI Standard 61, Drinking Water System Components – Health Effects.

## SIZE & PACKAGING

**GEO◆SKRIM NT-Series** is available in a variety of widths and lengths to meet the project requirements. Large diameter mill rolls are available to assure an efficient seaming process. Factory welded panels are produced in a controlled environment and are accordion folded and tightly rolled on a heavy-duty core for ease of handling and time saving installation.



Containment Liner

## PRODUCT

## PART #

**GEO◆SKRIM** ..... **N36BT1**

## APPLICATIONS

- |                         |                         |
|-------------------------|-------------------------|
| Waste Lagoon Liners     | Heap Leach Liners       |
| Landfill Caps           | Tunnel Liners           |
| Canal Liners            | Earthen Liners          |
| Disposal Pit Liners     | Interim Landfill Covers |
| Water Containment Ponds | Mining Tailing Ponds    |



# GEO◆SKRIM N36BT1

SCRIM REINFORCED POLYETHYLENE – NSF/ANSI STANDARD 61 CERTIFIED

## PRO-FORMA DATA SHEET

		GEO◆SKRIM N36BT1			
		IMPERIAL		METRIC	
PROPERTIES	TEST METHOD	MINIMUM	TYPICAL	MINIMUM	TYPICAL
APPEARANCE		Black 1-Side Texture		Black 1-Side Texture	
CORE THICKNESS	ASTM D5994	31 mil	35 mil	0.79 mm	0.89 mm
ASPERITY HEIGHT	ASTM D7466	16 mil	22 mil	0.41 mm	.056 mm
WEIGHT	ASTM D751	156 lbf/msf	177 lbf/msf	762 g/m <sup>2</sup>	864 g/m <sup>2</sup>
CONSTRUCTION		Dense scrim reinforced polyethylene			
TONGUE TEAR STRENGTH	ASTM D5884	80 lbf	115 lbf	356 N	512 N
GRAB TENSILE AT BREAK	ASTM D7004	240 lbf	310 lbf	1068 N	1379 N
TENSILE ELONGATION AT BREAK	ASTM D7004	22 %	30 %	22 %	30 %
PUNCTURE RESISTANCE	ASTM D4833	85 lbf	110 lbf	378 N	489 N
STANDARD OIT OR HIGH PRESSURE HPOIT	ASTM D3895 ASTM D5885	100 min 400 min	150 min 2400 min	100 min 400 min	150 min 2400 min
HYDRAULIC CONDUCTIVITY		1.83 x 10 <sup>-10</sup> cm/sec			
MAXIMUM STATIC USE TEMPERATURE		180° F		82° C	
MINIMUM STATIC USE TEMPERATURE		-70° F		-57° C	

**PRO-FORMA SHEET CONTENTS:** The data listed in the Pro-Forma data sheet is representative of initial production runs. These values may be revised at anytime without notice as additional test data becomes available.

GEO◆SKRIM N36BT1 is a textured flexible geomembrane, reinforced with a closely knit 9x9 weft inserted polyester scrim fully encapsulated between two layers of highly UV stabilized lineal low density polyethylene. Exceptional toughness, high tensile and puncture strength is achieved with the combination of premium high strength LLDPE and dense scrim reinforcement. A highly stabilized formulation consisting of antioxidants, UV stabilizers and carbon black provide excellent protection for long-term exposed or barrier applications.



Note: To the best of our knowledge, unless otherwise stated, these are typical property values and are intended as guides only, not as specification limits. Chemical resistance, odor transmission, longevity as well as other performance criteria is not implied or given and actual testing must be performed for applicability in specific applications and/or conditions. GEOCHEM, INC. MAKES NO WARRANTIES AS TO THE FITNESS FOR A SPECIFIC USE OR MERCHANTABILITY OF PRODUCTS REFERRED TO, no guarantee of satisfactory results from reliance upon contained information or recommendations and disclaims all liability for resulting loss or damage.

GeoCHEM, INC. Engineered Films Division  
 Sales & Procurement Center - Phone No. (907) 562-5755 ~ Fax No. (206) 219.3740  
 WA State Sales - Phone No. (206) 774.8777 ~ Toll Free: (800) 490.5320  
 GeoCHEM Website: <http://www.geocheminc.com>  
 Contact Us: <http://www.geocheminc.com/contactus.php>