



**Before**



# THE VARIFLO Upright Polymer Dispensing Machine



## Daily Maintenance Recommendations

When the job is complete, remove static mixer and dispose of it. Remove the manifold from the applicator and thoroughly clean with acetone or equivalent. Blow air through the manifold to check for clogs. Set manifold aside until ready to use on your next repair.

Hoses should remain air-tight and full of fluid to avoid drying out and crystalizing. This will avoid clogging. Machine should be stored in a warm, dry environment.

**After**



VariFlo is a lightweight, portable machine that can be transported in the back of a pickup truck. The machine has a bracket that allows the machine to be hung quickly and easily wherever it is most convenient to the user: on a tote, drum, fence or tailgate. Some government agencies have even customized their vehicles for the VariFlo machine so that they are always ready for fast repairs. VariFlo can also be attached to a light-weight dolly and rolled along the repair project.

For highway repairs or extensive damage, use the highly-portable VariFlo Upright Polymer Dispensing machine which can be set up and used by one person in just a few minutes. The VariFlo

## Specifications

machine dispenses Concrete Welder (available in gray, dark gray and black) or Dopey Soup (in gray or black) to quickly and easily repair large-volume pavement damage.

VariFlo repairs restore pavement structure with a high-strength polymer concrete that can be used on roads, bridges, slabs, parking structures and floors. Repairs are quick and long lasting; traffic can resume within 20 minutes.

Pump Motor Output:  
4 gallons per minute  
Kit Capacities: 10-30-100 gallon kits  
Weight: 85 pounds total (Machine 57 lbs. and Hoses 28 lbs.)  
Dimensions: 24"X12" 18"  
Packaged Shipping Dimensions: 24"x24"x 48"  
Power Requirement: 110/240 volts, may run on an inverter and truck battery for 4 hours. Portability: Can be hung on drums, trailer or cart.

## Benefits of Polymer Repair Using VariFlo Upright Polymer Dispensing Machine

Two-component polyurethane systems designed to support heavy traffic loads

- Chemical Resistance to Oils, Hydraulic Fluids, Diesel and Gasoline
- Flexible enough to minimize bond stresses and thermal stresses
- Low-viscosity ensures deep penetration to counter Hydraulic pumping action
- Rapidly-setting for quick return to traffic
- Fills voids to extend life-expectancy of concrete
- Restore aggregate interlock for better load transfer and slab stabilization
- Minimal prep and no demolition or removal significantly reduces labor requirements
- Reduced repair times allow for faster return to traffic with minimal interruption and safer work environment
- No training required
- Repair time is counted in minutes not hours
- Safe to use, no VOC's and closed-delivery system eliminates exposure concerns
- Lasts longer than conventional repair materials
- Grade restoration enhances smooth ride
- Cost effective

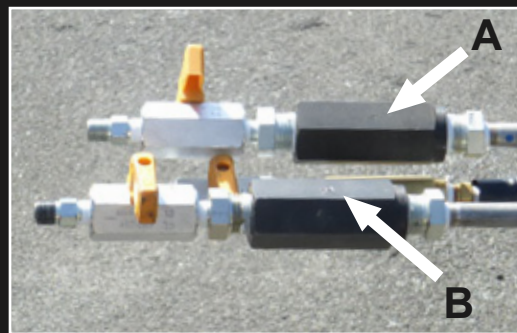


## Long-Term Storage / Maintenance

If the machine will not be used for more than two weeks, flush the A-side hose with diesel or hydraulic oil. When ready to use again, flush A-side thoroughly before reconnecting to the polymer liquid.

## Replacement Parts/Fittings

- Check Valve with Mini Ball Valve A
- Check Valve with Mini Ball Valve B
- Fin Mixer
- Static Mixers
- Vent Screw
- A-Draw Hose
- B-Draw Hose
- A-Draw Pipe
- B-Draw Pipe
- A-Pump
- B-Pump
- Complete hose assembly with applicator



**For more information or to order  
replacement parts  
please call**

**800-490-5320**



# THE VARIFLO UPRIGHT POLYMER DISPENSING MACHINE *Operation Instructions*



1. Clean pavement with broom or blower



2. Dry pavement with propane torch or heat lance



3. Pre-mix materials with fin mixer for 5 minutes



4. Connect drum fittings



5. Uncoil the hoses



6. Vent drum with supplied vent screw



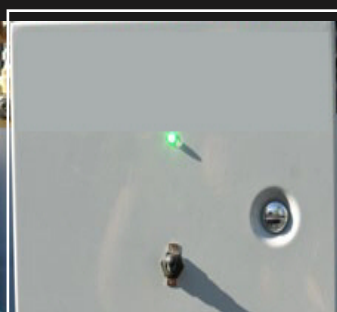
7. Connect to a generator



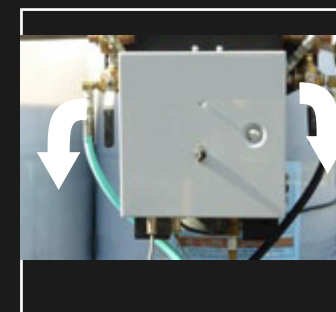
8. Move handles into upright position to recirculate material



9. Use velcro strap to hold gun trigger in the on position for 5-15 minutes, depending on drum size



10. Turn on power. Remove velcro strap from gun



11. Move handles down to begin running material through hoses



12. Spray tools with vegetable oil



13. Cut static mixer tip



14. Attach the manifold



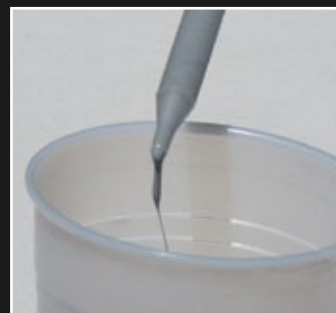
15. Tighten the manifold



16. Check ratio



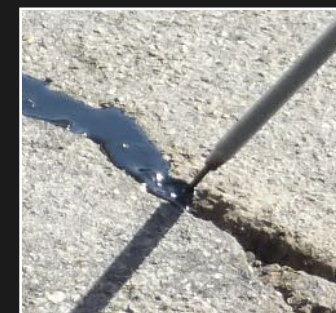
17. Attach static mixer



18. Flow small amount of material to test product setup time



19. Squeeze trigger to begin flow



20. Fill damaged pavement with polymer

**When the repair is complete:**



Remove static mixer and dispose of it



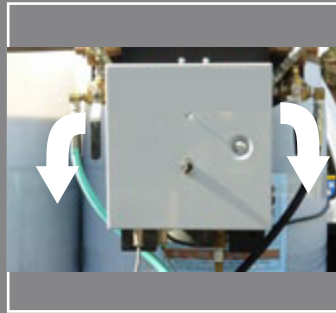
Remove the manifold from the applicator



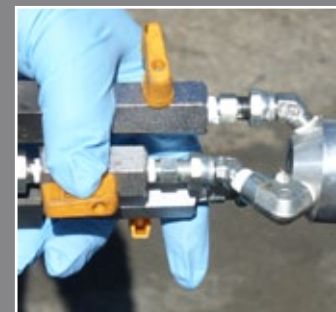
Thoroughly clean with acetone or equivalent



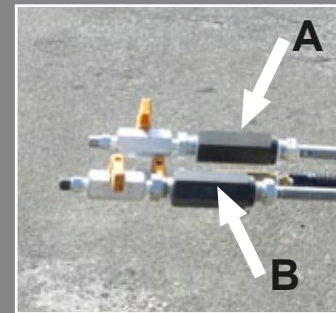
Clean tools (See back for storage/maintenance)



Verify that handles are down to begin running material through hoses



Blow air through the manifold to check for clogs



Unscrew check valves (marked with A and B) to clear clogged liquid



Depress button to purge air through static mixer to avoid material hardening

**Troubleshooting**